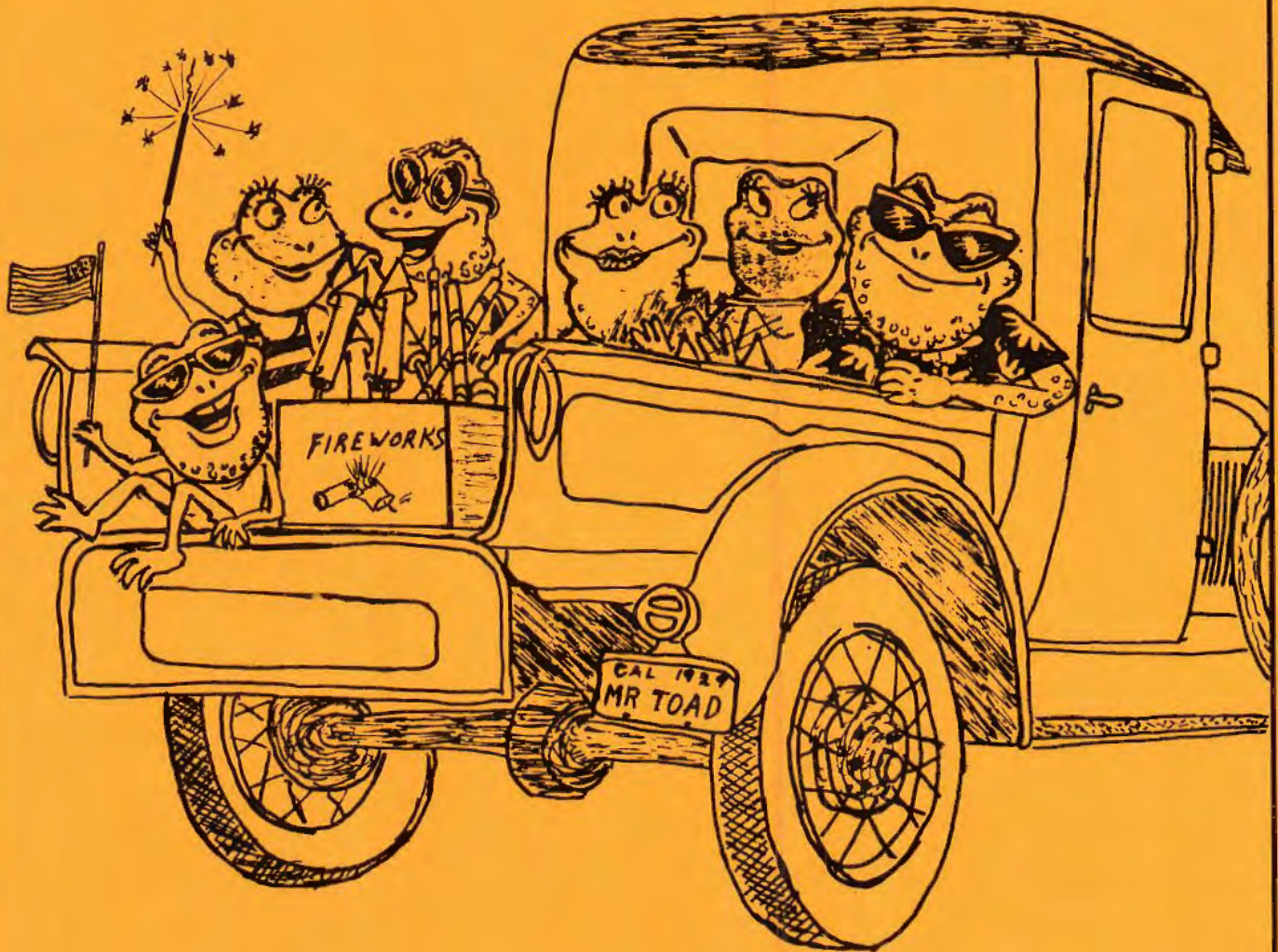


# The Distributor

Orange County Model A Ford Club

JULY, 1992  
VOLUME 32, ISSUE 7

EDITOR: JIM WILLETT  
PUBLISHERS: BOB & KARYN SITTER





## 1992 BOARD MEMBERS

---

PRESIDENT	PAUL STEED	714/998-0394
SECRETARY	PEGGY BLOOM	714/839-7656
TREASURER	LES CARLYLE	714/771-1238
TECHNICAL	ROGER ADAY	714/993-4558
ACTIVITIES	LOU SPIELBERGER	714/751-5102
SPECIAL EVENTS	JOE WAVRA	714/549-2881
EDITOR	JIM WILLET	714/768-4939
PUBLISHERS	BOB & KARYN SITTER	714/777-2486

## COMMITTEE CHAIRPERSONS

---

SUNSHINE & SORROW	BEV MARSH	714/531-7237
ACCC REP.	DON TUNE	714/832-8239
REGIONAL REP.	PAUL STEED	714/998-0394
REFRESHMENTS	ED COTE'	714/542-6161
RAFFLE	JOE RECKER	714/639-6972
BUTTONS	F.D. "RED" KISER	714/539-2915
CLUB GREETER	JON HEILAND	714/836-4244

## GENERAL MEETING

---

JULY 9, 1992 IN HART PARK

POT LUCK DINNER @ 6:30 P.M.

MEETING @ 7:30 P.M.

(SEE MAP)

Bring plates, silverware, and drinks  
A to L bring main dish and salad  
M to A bring main dish and desert



## TIGER TAILS

by Paul Steed  
President

Greetings! Ford Fun Day started off with an "A" distributor seminar in the Sears parking lot. After overhauling Wayne Krugs' distributor, we were off. 17 Members from our club were in attendance. There were many fun Gymkhana events. Everyone had "A" fun day. I scored an OOPS trophy for knocking over the Beeker Gymkhana event. Special thanks to Roger Aday for running the Orange County's Black Box event.

I hope all of you enjoyed the Burma Shave video at the June general meeting.

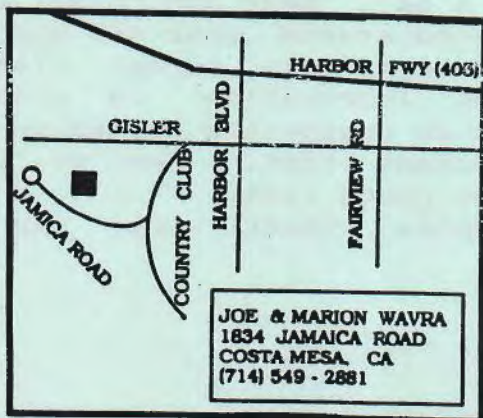
We still need a host for the main course for our Progressive Dinner in September. Please let me know if you can be a host. Remember, the Progressive Dinner is always one of the years biggies. Join in.

Enjoy the 4th, see you in July.

P.S. We will be staying at the Imperial Palace in Las Vegas for the Regional Tour October 23, 24, and 25th. There will be more information at the general meeting in July. Plan on attending.

P.P.S. Get well Lou!

## BOARD MEETING MAP



## BOARD MEETING

by Peggy Bloom  
Secretary

Paul Steed called the meeting to order at 7:50 PM at Les and Deeno Carllysles' house. Present were board members Roger Aday, Peggy Bloom, Les Carllysle, Joe Wavra, Jim Willett and members Deeno Carllysle and Marion Wavra. A letter from the Sonora A's requesting information on how our club selects its lifetime members was discussed and given to Peggy to answer. Roger Aday said our club bought but has not received two MAFCA rosters. The secretary will write to find out why the books haven't been sent. The minutes and the treasurers report were approved. Les noted a start up fee of \$10 has been added to MAFCA dues bringing the total for new membership to \$47.

Summer activities were reviewed: the Poker Run, the Summer historical tour and the Avalon trip. Joe Wavra said Santa Barbara needs Model A's for a November parade, but the board decided to decline due to a busy November schedule and the traditional May trip to Santa Barbara.

Roger Aday reported on the safety seminar and mentioned upcoming Friday night events.

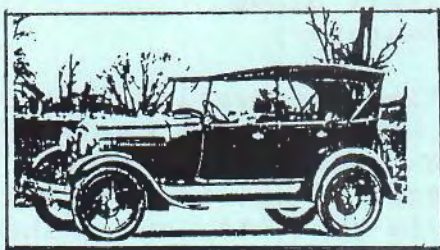
The next board meeting, Wednesday, July 15, 7:30 p.m. will be at Joe and Marion Wavras' house, 1834 Jamaica Road, Costa Mesa, and will be a Gold Country tour meeting as well as a board meeting.





## ACTIVITIES BY LOU

---

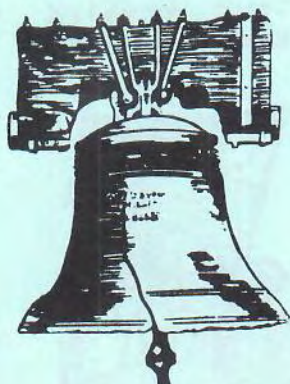


by Lou Spielberger  
Activities Director

Ahoy, Sunday August 9th the tour will be a sea going tour to Avalon, Catalina on the Catalina Flyer, out of Balboa. There are many things to do and see; Glass Bottom boat, Inland tour to Airport in the sky, City tour, and several shops to browse in as well as restaurants for lunch.

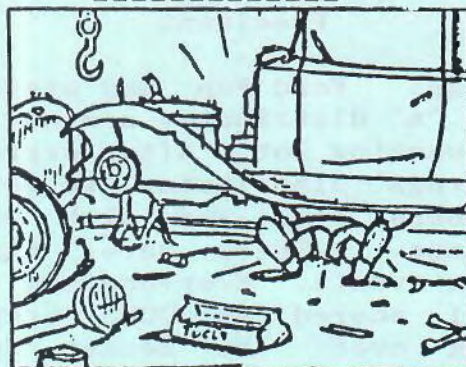
The price is \$28 roundtrip each with children under 12 for \$15. Parking on the beach at Balboa Pier is \$6 per car. The boat leaves Balboa at 9:00 a.m. and should be there 10:15, a 75 minute cruise. The boat will return at 4:30 p.m. We must make reservations 2 weeks in advance. Call Lou for this, 714/751-5102.

There have been several requests to have the campout. Therefore it will be in September. It was impossible to get reservations in August.



## ROGERS GARAGE

---



by Roger Aday  
Technical Director

Six cars showed up for the Summer Tour safety seminar. Among other things found were: a loose throttle shaft, missing cotter keys, loose nuts and bolts, water leaks, and loose brakes.

We balanced wheels, packed wheel bearings, tightened water pump shafts, and adjusted brakes. Time spent now, means less time on "road side seminars."

The seminar for next month will be building a solid state cut-out. Try to find any old original non-working cut-outs and bring them to the seminar.

This is a "soft" modification that saves most people a lot of "Sunday morning before the tour" dead batteries. I will have a supply of kits at the seminar. The seminar will be at my house on Friday, July 10th, at 7:30 P.M.

Because we tend to drive our Model A's more during the Summer, take about a half hour and crawl under, over, and around your car and check for loose or worn parts. Also do a thorough lubrication in order to prevent an unexpected breakdown at an inconvenient time. See me for a detailed check list.

Remember; check your lug nuts often!



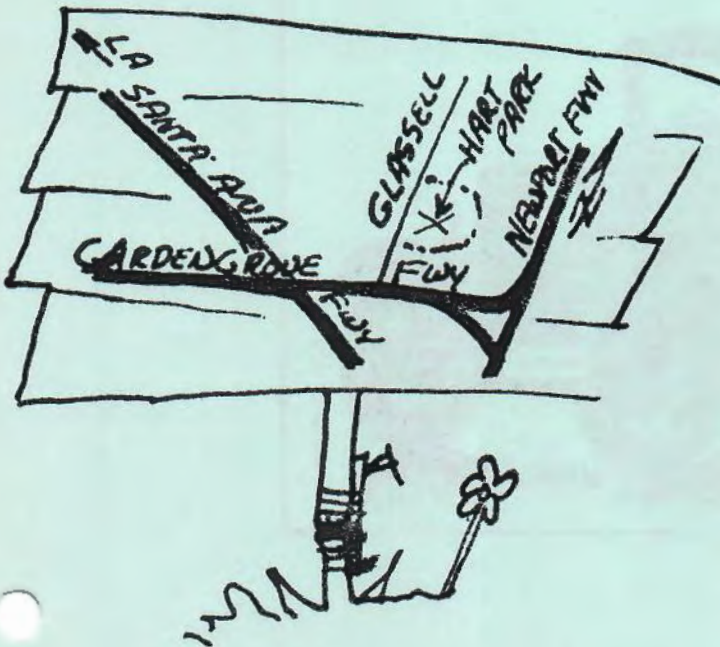
## THANKS

Thanks to those members who participated in the Old World exhibit on Sunday, June 7th. The 20 cars which were present made a favorable impression for the project.

Joe Wavra

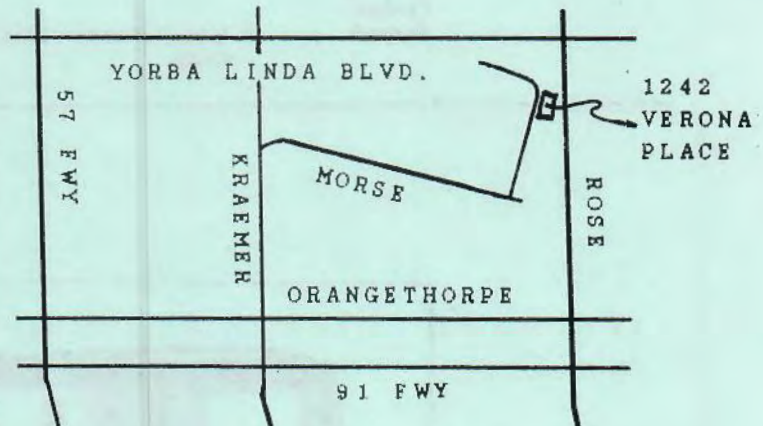
## PETE HIATT WED

Pete Hiatt and Betty Faulkner were married March 19, 1992, at the Inn at Mt. Ada in Avalon, Catalina. The Inn is the old Wrigley Mansion with a breathtaking view of Avalon Harbor from the main balcony. The ceremony which took place on the balcony was attended by family and friends. After the ceremony they danced to live music with the famous casino as a backdrop. Pete and Betty stayed on at the Inn for their honeymoon in the master suite. They also spent a few more days in Avalon Harbor aboard their 25 foot cruiser, the Betty Boopsea.



## HARD LUCK TROPHY

Roger Aday was such a close second in last months voting for hard luck trophy that he was the unanimous winner for this month. The trophy was passed along by Don Tune, winner last month. For those who are not aware, Roger achieved this recognition by proving that a Model A tire which is set free from his car while enroute can easily display a hidden source of power and speed away at a rate exceeding that of the car. If all four tires are capable of this feat of going faster than the car, what is the secret force that holds back the Model A? Could it be mechanical brakes? Congratulations Roger, keep those lug nuts tight.



SEMINAR LOCATION  
ROGER ADAY'S

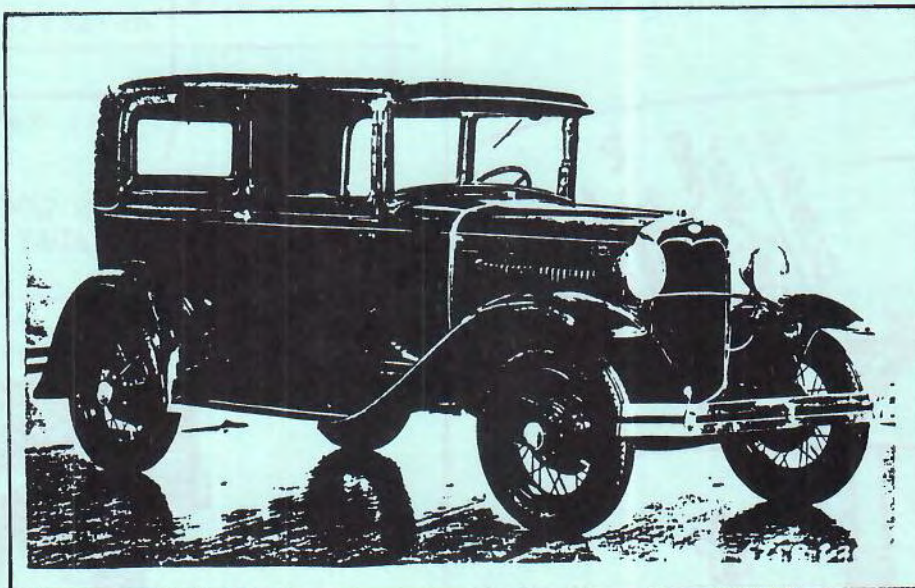




## TECH SESSION TIPS

### MOTOR BOLT SIZES AND NUMBER USED

<i>Main Bearing</i>	4 $\frac{1}{2}$ "x $5\frac{1}{2}$ " main bearing (front center) bolts. 2 $\frac{1}{2}$ "x $1\frac{1}{2}$ " main bearing (rear) bolts.
<i>Timing Gear Housing</i>	6 $\frac{3}{8}$ "x $1\frac{1}{8}$ " (cap screw and lockwashers) timing gear case. 1 $\frac{3}{8}$ "x $1\frac{1}{8}$ " (cap screw) timing gear case with special head $\frac{5}{16}$ "x $\frac{3}{4}$ " used for timing ignition.
<i>Flywheel</i>	4 $\frac{7}{16}$ "x $\frac{3}{4}$ " S. A. E. (cap screws) drilled head.
<i>Clutch Housing Plate</i>	2 $\frac{1}{4}$ "x $1\frac{1}{2}$ " cap screws and lockwashers.
<i>Oil Pan</i>	20 $\frac{5}{16}$ "x $\frac{3}{4}$ " cap screws and lockwashers.
<i>Valve Side Plate</i>	10 $\frac{5}{16}$ "x $\frac{3}{4}$ " cap screws and lockwashers.
<i>Cylinder Head</i>	12 $\frac{7}{16}$ " S. A. E. nuts.
<i>Oil Line Manifold</i>	2 $\frac{5}{16}$ "x $1\frac{1}{4}$ " cap screw and copper washers.
<i>Manifold for Gas</i>	4 $\frac{7}{16}$ " S. A. E. nuts and flat washers.
<i>Starting Motor</i>	3 $\frac{3}{8}$ "x $1$ " cap screws and lockwashers and 3 steel shim spacer washers, used between starting motor flange and mounting pad.
<i>Transmission Assembly</i>	11 $\frac{3}{8}$ "x $1$ " cap screws and lockwashers.
<i>Steering Column</i>	2 $\frac{1}{2}$ "x $1$ " S. A. E. cap screws and lockwashers, where column bolts to chassis.
<i>Steering Column Support</i>	2 $\frac{1}{4}$ "x $1$ " Fillister head mach. screws for cowl support clamp.





## CALENDAR OF COMING EVENTS

---

JULY, 1992

- 7-4 Saturday  
Great Race participation canceled
- 7-9 Thursday  
General meeting.  
\*\*\* in Hart Park \*\*\*
- 7-10 Friday  
Technical seminar  
Solid State Cutout.  
Roger Aday's house, 7:30 p.m.
- 7-12 Sunday  
Orange Co. tour of historical places. Mileage tour, leave Mall of Orange (Sears) 10:30 AM, bring a picnic lunch.
- 7-15 Wednesday  
Board meeting, 7:30 p.m.  
At Joe Wavra's house.
- 7-18 to 7-25  
Summer Tour, Gold Chain Highway #49 to Mother Lode Country, Reno and back home. Call Joe Wavra for details.
- 7-26 Sunday  
Diamond Tread Picnic. Annual meet ice cream, barbecue picnic. Leave So Coast Plaza (May Co) 9:00 a.m. Mileage tour, we must make reservations, call Lou or Paul.



AUGUST, 1992

- 8-1 & 8-2 Saturday, Sunday  
Long Beach Model T Club Antique Auto Fair & Car show at Veterans Stadium in Long Beach
- 8-9 Sunday  
Pomona Swap meet at Fairplex
- 8-9 Sunday  
Tour to Catalina, leave Balboa Pier at 9:00. (see "activities")
- 8-13 Thursday  
General meeting, Hart Park.
- 8-14 Friday  
Technical seminar
- 8-16 Sunday  
Annual beach party, Doheny park.
- 8-16 Sunday  
Riverside Corona Model T Club 25th antique car swap meet & parts exchange, Placentia Lane, Riverside
- 8-19 Wednesday  
Board meeting, 7:30 p.m.  
At Paul Steeds' house.

September, 1992

- 9-10 Thursday  
General Meeting
- 9-11 Friday  
Technical Seminar
- 9-12 Saturday  
Progressive Dinner
- 9-16 Wednesday  
Board Meeting, Peggy Blooms' house
- 9-18 thru 20  
Rim Of The World tour
- 9-27 Sunday  
Paradise Valley Swap Meet



These businesses were instrumental in the success of our annual pancake breakfast through their contributions and support. Please consider their patronage when supplying your needs.

MOVIELAND WAX MUSEUM  
and  
RIPLEY'S BELIEVE IT OR NOT  
7711 BEACH BLVD.  
BUENA PARK, CA 90620

LAFF STOP  
2122 S.E. BRISTOL  
SANTA ANA, CA 92707

MERVYNS DEPARTMENT STORE  
9811 ADAMS  
HUNTINGTON BEACH, CA 92646

A & L PARTS SPECIALTIES  
BOX 301  
CANTON, CT 06019

MERLE NORMAN COSMETICS  
2185 N. ORANGE MALL  
ORANGE, CA 92665

THE RAZZMATAZZ  
821 S. BEACH BLVD.  
ANAHEIM, CA 92804

BETZ SPEED & COLOR  
1470 W. KATELLA  
ORANGE, CA 92667

THE RESTORER MAGAZINE  
250 S. CYPRESS  
LaHABRA, CA 90631

ORANGE COUNTY PERFORMING ARTS  
600 TOWN CENTER DRIVE  
COSTA MESA, CA 92626

FLINTLOCK  
1238 S. BEACH BLVD.  
ANAHEIM, CA 92804

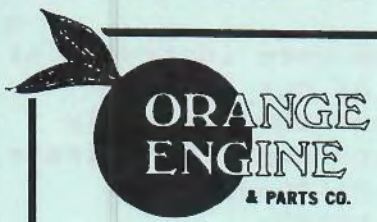
INTERSTATE BATTERY  
7327 WHITTIER AVE.  
WHITTIER, CA 90602

FUN ZONE BOAT CO.  
BALBOA PAVILION  
400 MAIN STREET  
BALBOA, CA 92661

WILD BILL'S WILD WEST  
DINNER EXTRAVAGANZA  
7600 BEACH BLVD.  
BUENA PARK, CA 90620-1838




These businesses were instrumental in the success of our annual pancake breakfast through their contributions and support. Please consider their patronage when supplying your needs.



parts 633-7305  
FAX 633-8473

343 S. Tustin Ave., Orange, California 92666



Petroleum Distributors  
Serving the West Since 1965

Anaheim Office:  
P.O. Box 710, 501 South Olive Street  
Anaheim, CA 92815-0710 • (714) 533-1379

Corporate Office: 1730 W. Mission Rd., Escondido, CA 92025-0331 • (619) 745-7723

**INDUSTRIAL-FLEET & AUTOMOTIVE PETROLEUM PRODUCTS**

(714)639-6202

bob patchin's  
**coin gallery, inc.**

346 south tustin avenue, orange, california 92666



714-633-3440

814 W. CHAPMAN AVE.  
ORANGE, CA 92668

BARRY SHORT

**enviro-tech**  
International  
*Products That Protect & Help Our Environment*

ED DAVIS  
Independent Distributor for Enviro-Tech International

DIVERSIFIED CONSULTING  
P.O. Box 925  
Palos Verdes Estates, CA 90274

Bus: (310) 514-4464  
Home: (310) 373-6667



These businesses were instrumental in the success of our annual pancake breakfast through their contributions and support. Please consider their patronage when supplying your needs.

Steve Contreras

### C. W. MOSS AUTO PARTS, INC.

1909/1948 & up to 1956 p/u  
Ford Parts and Accessories

402 W. Chapman Ave.  
Orange, CA 92666  
(714) 639-3083

967 E. Mission Blvd.  
Pomona, CA 91766  
(714) 629-5223



Customer Service

### MODEL "A" PARTS

Phone & Mail Order  
(714) 674-5171  
FAX: (714) 674-0054

RUDY & LORI PEREZ

### MEETS EARLY AUTO

HOURS  
TUES.-FRI. 10-5  
CLOSED SWAP MEET WEEKENDS

29885 SECOND ST.  
UNIT C  
LAKE ELSINORE, CA 92532



*T's, A's, and V8's*

### Model "A" Wood

BOB BETSCH  
(209) 299-7120

491 Herndon #225  
Clovis, CA 93612

Jay & Bea DeARMOND

(714) 527-2323

*Hobby City*  
**Doll & Toy Museum**  
1238 So. Beach Blvd.  
Anaheim, Calif. 92804

*A half scale replica of the  
Whitehouse in Washington, D.C.*

### VINTAGE PARTS

11318 BEACH BLVD., STANTON, CA 90680  
(714) 894-5464 FAX (714) 894-4563

1909 TO 1959  
CARS AND TRUCKS  
F-100's TO 1966

HOURS:  
Mon.-Fri. 9 - 5  
Sat. 9 - 4



**MEL GROSS**  
904 North Third Street  
Montebello, California 90640  
(213) 728-5712

Member of the Model A Ford Club of America

### LIFETIME GUARANTEE MUFFLERS YORBA LINDA MUFFLER



FOREIGN - DOMESTIC - RVS - OFF ROAD  
ANTIQUES & CLASSICS  
STOCK REPLACEMENT - CUSTOM DUALS

4926 ARROYO ST.  
YORBA LINDA, CA, 92686

(714) 777-2195  
JERRY LEDBETTER



VINTAGE  PARTS

11318 BEACH BLVD., STANTON, CA 90680  
(714) 894-5464

1909 TO 1959  
CARS AND TRUCKS  
F-100's TO 1966

HOURS:  
Mon.-Fri. 9 - 5  
Sat. 9 - 4

FOR SALE:

1931 Model A Roadster Pick-up.  
Very rare, Nice fenders and body  
sheet metal. Disassembled.  
Complete except for bed. Priced  
below market for fast sale.  
\$3000, firm. Terry Lucas  
(714)633-0390

FOR SALE:

\$50 each, 19" Wheels and Tires.  
Set of 5 available, all in good  
condition, and lots of tread.  
Call Jim Marquardt:

714/786-7128 home  
714/220-3768 work

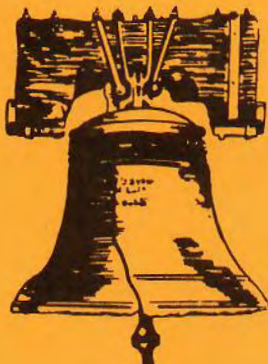
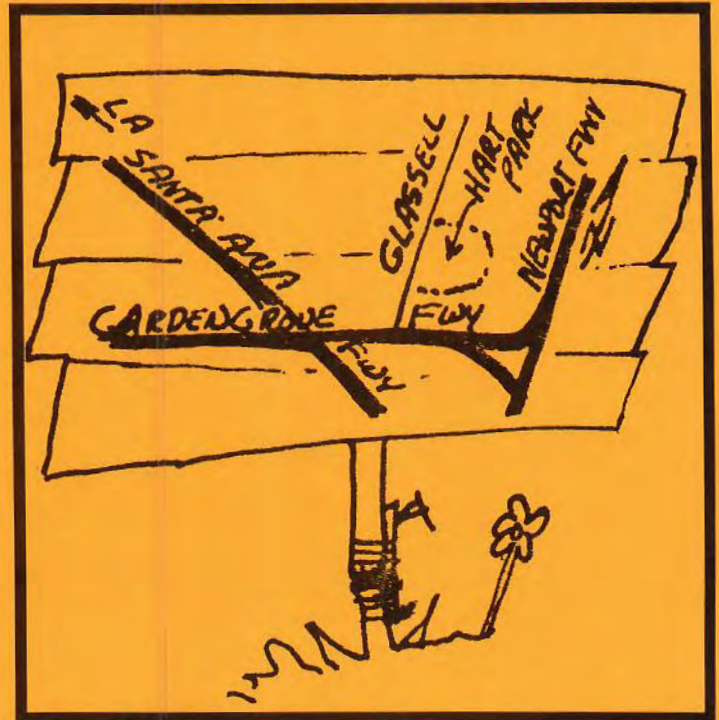
FOR SALE:

1929 Coupe, hydraulic brakes.  
\$6500, Richard Kiss, 552-6336

FOR RENT:

Cabin at Big Bear Lake for rent,  
weekend/weekly, 3 bedroom,  
discount rate to Club members.  
Call; Myke Wingett (714)542-3089

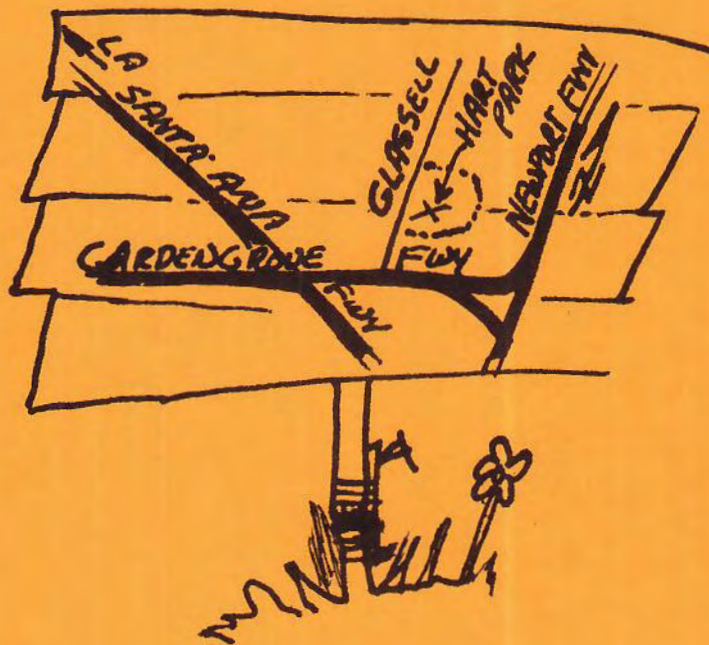
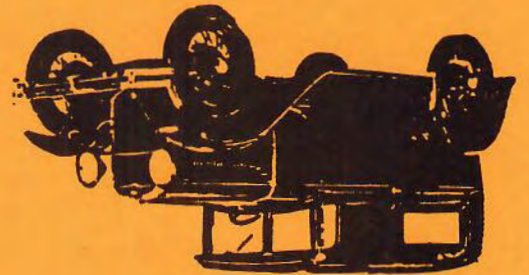
GENERAL MEETING LOCATION





# First Class Mail

MAFCA  
ORANGE COUNTY CHAPTER  
POST OFFICE BOX 10595  
SANTA ANA, CA 92711



[ GENERAL MEETING LOCATION ]